

Read the magazine article.

Superheroes Weekly

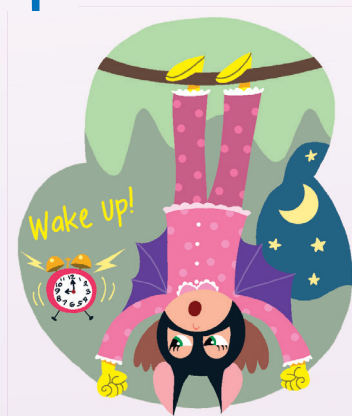
## What does Betty Bat do every day?

GREAT NEWS for Betty Bat fans! We know you have lots of questions about this amazing superhero. This week we are happy to answer some of them.



## What time does Betty Bat get up?

- 5 We get up in the morning but bats get up at night. Betty Bat has an alarm clock. It wakes her up at nine o'clock at night.



- Betty Bat is clean. She brushes her  
10 teeth at nine fifteen every night. She has big teeth so it takes a long time. At half past nine, she has spiders on toast.



17th March 20XX



## Does Betty Bat go to school?

- 15 Betty Bat goes to Superhero School. She flies to school. She leaves home at ten o'clock and arrives at school at ten twenty. She is never late.



## What does Betty Bat do after school?

- 20 School finishes at six o'clock in the morning. After school, Betty Bat flies around and helps people.



## What time does Betty Bat go to bed?

- 25 Betty Bat goes home at eight forty-five in the morning. She has a bath and goes to bed at ten, upside down, of course!



Do you think Betty Bat has good habits?  
How about you? Do you have good habits?